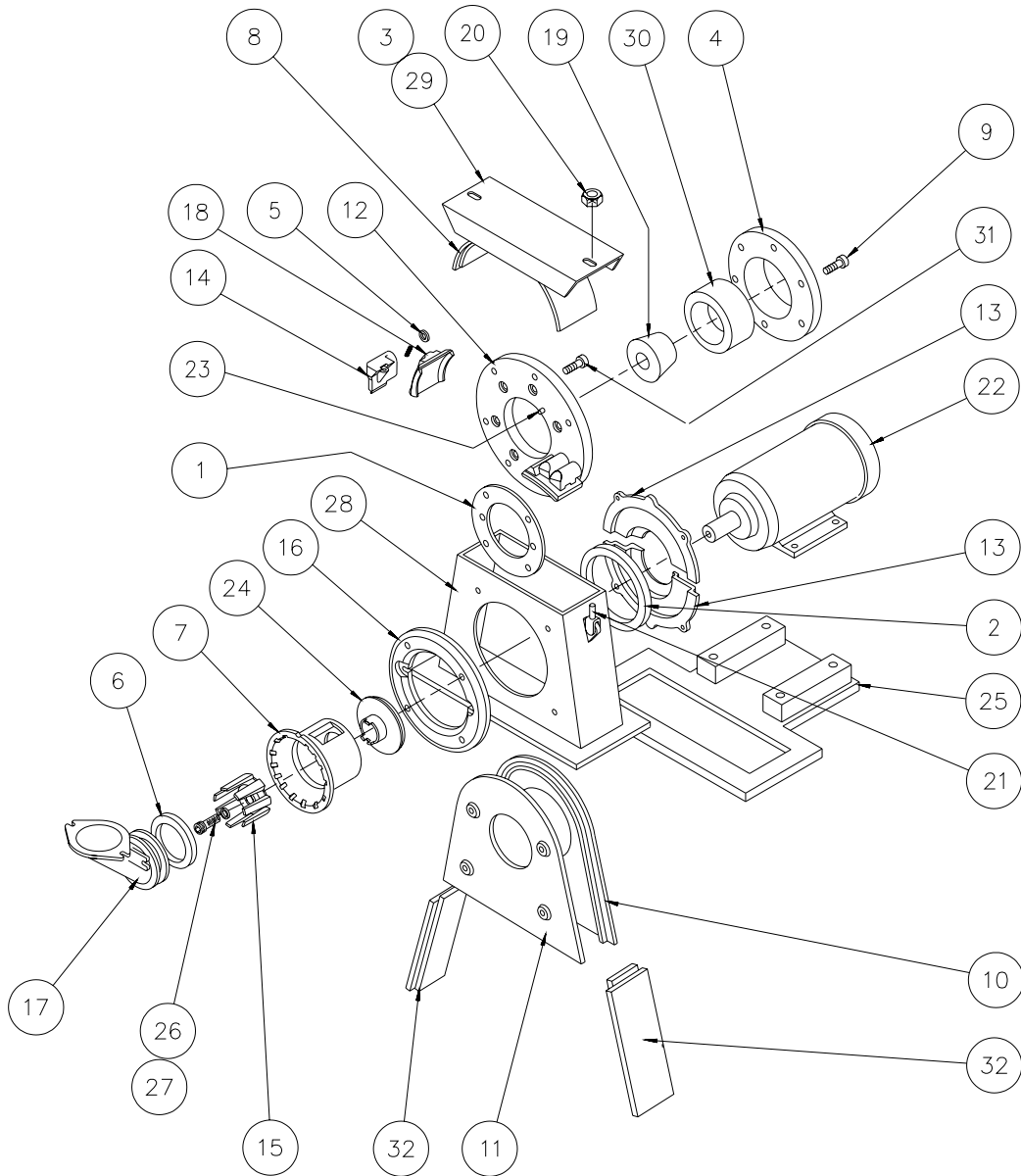


CW BLAST WHEEL ASSEMBLY

Item Number	Part Number	Qty	Description
1	0000268	1	Cage retainer
2	0000293	1	Hub seal
3	0002046	1	Blast housing cover liner
4	0000291	1	Hub
5	5000294	7	Shear ring
6	5000302	1	Feed spout seal
7	5000138	1	Control cage
8	5001936	1	Top liner
9	7003920	7	Blade block screw
10	5001938	1	Rear side liner
11	5001939	1	Front side liner
12	0002428-002	1	Bare wheel
13	5100292	1	Hub seal
14	5100116	1	Blade block set
15	5000136	1	Impeller
16	5100301	1	Cage adapter
17	5000303	1	Feed spout
18	5102064	1	Blade set
19	6000956	1	Bushing, 1-5/8"
20	7002752	2	Hex nut
21	6101159	2	Threaded clevis
22	8101030	1	Motor, 15 hp
23	6000531	1	Roll pin
24	5000137	1	Centering plate
25	0142300	1	Base plate weldment
26	6000962	1	Lock washer – Special 5/8"
27	7004114	1	Socket cap screw
28	0102045	1	Housing
29	0102041	1	Housing lid
30	6001204	1	Bushing adapter
31	7003910	7	Blade block screw
32	5002308	1	Long end liner

\* REPLACEMENT PARTS LIST IS SUBJECT TO CHANGE WITHOUT NOTICE.

<p>Tune-up kit #0144502 for 12" wheels is available for your shelf stock. This kit contains the following common wear items: blade set, impeller and socket head screw, control cage, and seals. For all other parts please reference the above list</p>
--



M0475

**BLAST WHEEL ASSEMBLY – ISOMETRIC VIEW**  
 (Refer to replacement parts list on page 2-2)