

REPLACEMENT PARTS LIST - CW BLAST WHEEL ASSEMBLY
(0109850-029)

Item Number	Part Number	Qty	Description
1	0103624	1	Housing Blast Weldment
2	0009383-002	1	Bare Wheel Finished CW
3	5100104	1	Blade Block Set
4	6000468	1	Bushing
5	7003914	1	Impeller Screw, Ski Cap
6	5003710	2	Clamp Abrasive Spout
7	0003703	1	Cage Retainer
8	5100105	1	Blade Set
9	5102624	1	Cage Adapter
10	5103576	1	Seal Hub Casting
11	5000158	1	Impeller
12	6000531	1	Pin Roller
13	5000108	1	Feed Spout
14	7009523	2	Stud Support
15	5000110	2	Liner Cast End
16	5000109	1	Liner Cast Top
17	5000111	2	Liner Cast Side & Front
18	0103572	1	Lid Blast Housing Std
19	0003688	1	Liner Blast Wheel Lid
20	6101159	2	Clevis, Threaded
21	7002752	2	Nut, Hex Extra Heavy
22	7004712	2	Housing Bolt
24	5000147	1	Centering Plate
25	6000465	1	Adaptor Bushing
26	5000250	1	Control Cage
27	5000294	4	Shear Ring Blast Wheel
28	7003910	4	Blade Block Screw, Ski Cap
29	8101040	1	Motor, 5HP
30	7005706	6	Bolt 3/8-16 x 3/4
31	7002707	4	Nut, Hex 3/8-16
32	7003006	10	Flat Washer 3/8"

** REPLACEMENT PARTS LISTS ARE SUBJECT TO CHANGE WITHOUT NOTICE.

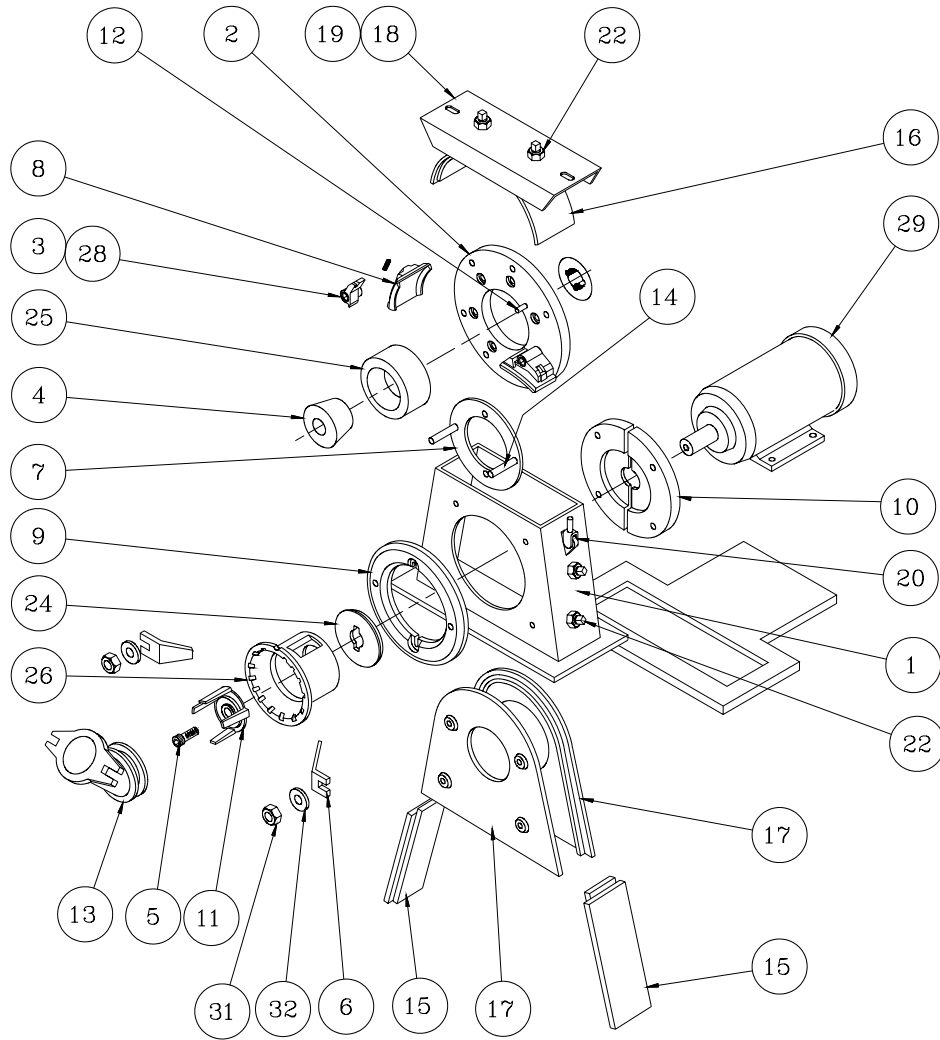
Tune-up kit #0144500 for 9" wheels is available for your shelf stock. This kit contains the following common wear items: blade set, impeller and socket head screw, control cage, and seals. For all other parts, please reference the above list.

REPLACEMENT PARTS LIST - CCW BLAST WHEEL ASSEMBLY
(0109850-030)

Item Number	Part Number	Qty	Description
1	0103624	1	Housing Blast Weldment
2	0009383-002	1	Bare Wheel Finished CW
3	5101261	1	Blade Block Set
4	6000468	1	Bushing
5	7003914	1	Impeller Screw, Ski Cap
6	5003710	2	Clamp Abrasive Spout
7	0003703	1	Cage Retainer
8	5100105	1	Blade Set
9	5102624	1	Cage Adapter
10	5103576	1	Seal Hub Casting
11	5000158	1	Impeller
12	6000531	1	Pin Roller
13	5000108	1	Feed Spout
14	7009523	2	Stud Support
15	5000110	2	Liner Cast End
16	5000109	1	Liner Cast Top
17	5000111	2	Liner Cast Side & Front
18	0103572	1	Lid Blast Housing Std
19	0003688	1	Liner Blast Wheel Lid
20	6101159	2	Clevis
21	7002752	2	Nut Hex Extra Heavy
22	7004712	2	Housing Bolt
24	5000147	1	Centering Plate
25	6000465	1	Adaptor Bushing
26	5000250	1	Cage Control
27	5000294	4	Shear Ring Blast Wheel
28	7003910	4	Blade Block Screw, Ski Cap
29	8101040	1	Motor, 5HP
30	7005706	6	Bolt 3/8-16 x 3/4"
31	7002707	4	Nut, Hex 3/8-16
32	7003006	10	Flat Washer 3/8"

** REPLACEMENT PARTS LISTS ARE SUBJECT TO CHANGE WITHOUT NOTICE.

<p>Tune-up kit #0144500 for 9" wheels is available for your shelf stock. This kit contains the following common wear items: blade set, impeller and socket head screw, control cage, and seals. For all other parts, please reference the above list.</p>



M0101A

9" BLAST WHEEL – EXPLODED VIEW
 (Refer to replacement parts list on page 2-2)